

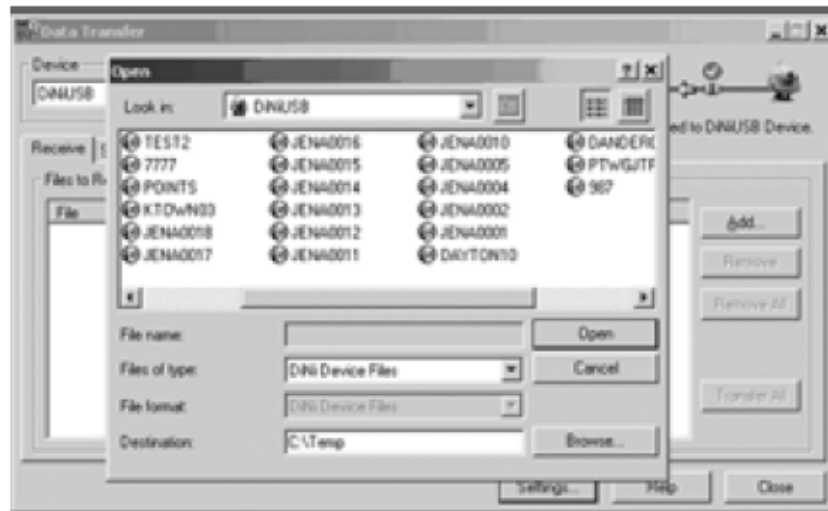
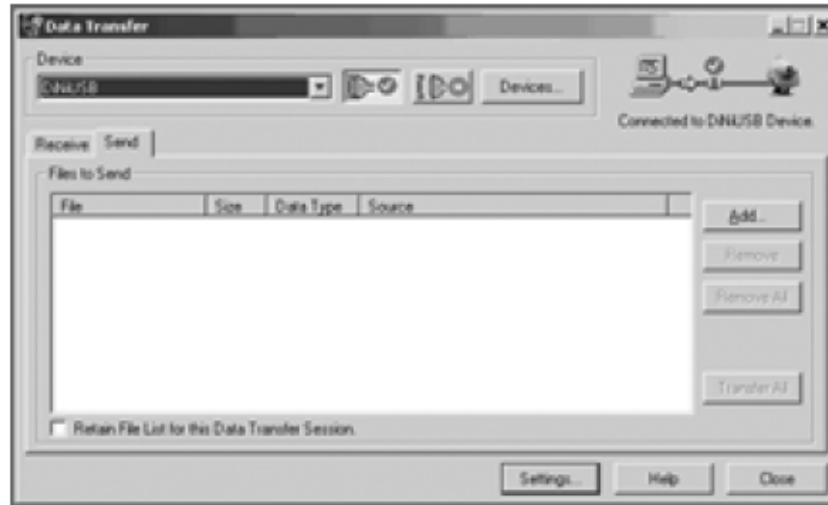
# DATA TRANSFER

# Data transfer method

- Using cable by using data transfer software
- By using Usb cable to Pendrive

# Trimble DiNi to PC

- Connect PC via cable PN 73840019 to the Trimble DiNi.
- Start Trimble Data transfer at the PC
- 3. Use Device "DiNiUSB"
- Use the "Receive" tab
- Select the files for transferring to PC
- Define the folder at the PC and start the data transfer.

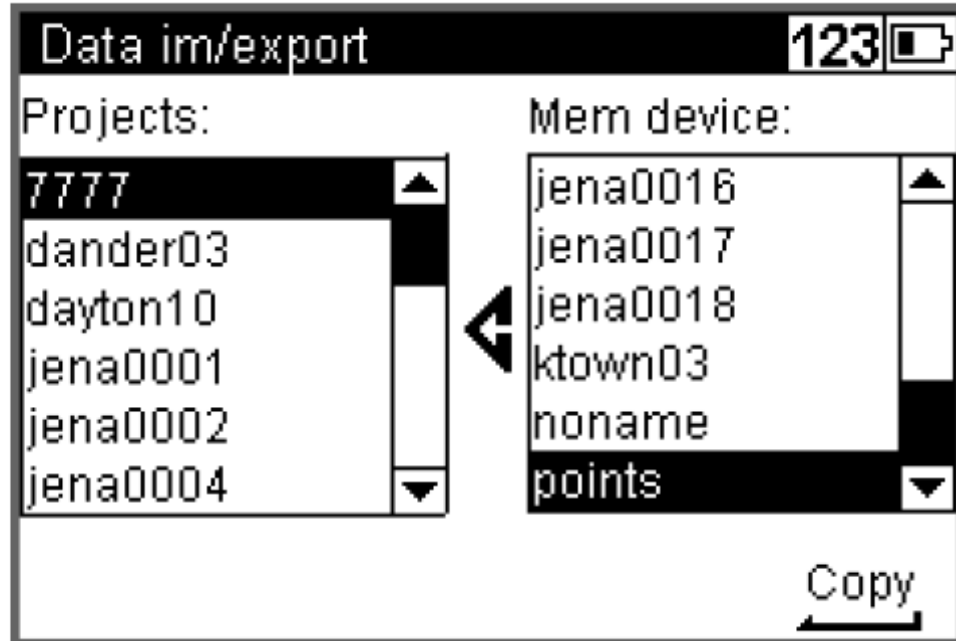


- Use the "Send" tab
- Select the files for transferring to DiNi
- Start the data transfer.



# DiNi to USB

Connect the USB Memory Stick via cable PN 73841019 to the Trimble DiNi. The instrument offers the possibility to open the menu for Data import and export directly. The instrument allows copying files in both directions.



THANK YOU