



MINISTRY OF WATER, LAND AND NATURAL RESOURCES

Welcome

Introduction to MaCGDI and MyGDI

Level 7 & 8, Wisma Sumber Asli,
No. 25, Persiaran Perdana, Precint 4,
Federal Government Administrative Centre,
62574, Putrajaya, Malaysia.
Tel.: +6 03-8886 1156 Fax: +6 03-8889 4851
www.mygeoportal.gov.my

Presentation Outline

1

Introduction to MaCGDI & MyGDI

2

MyGDI Activities

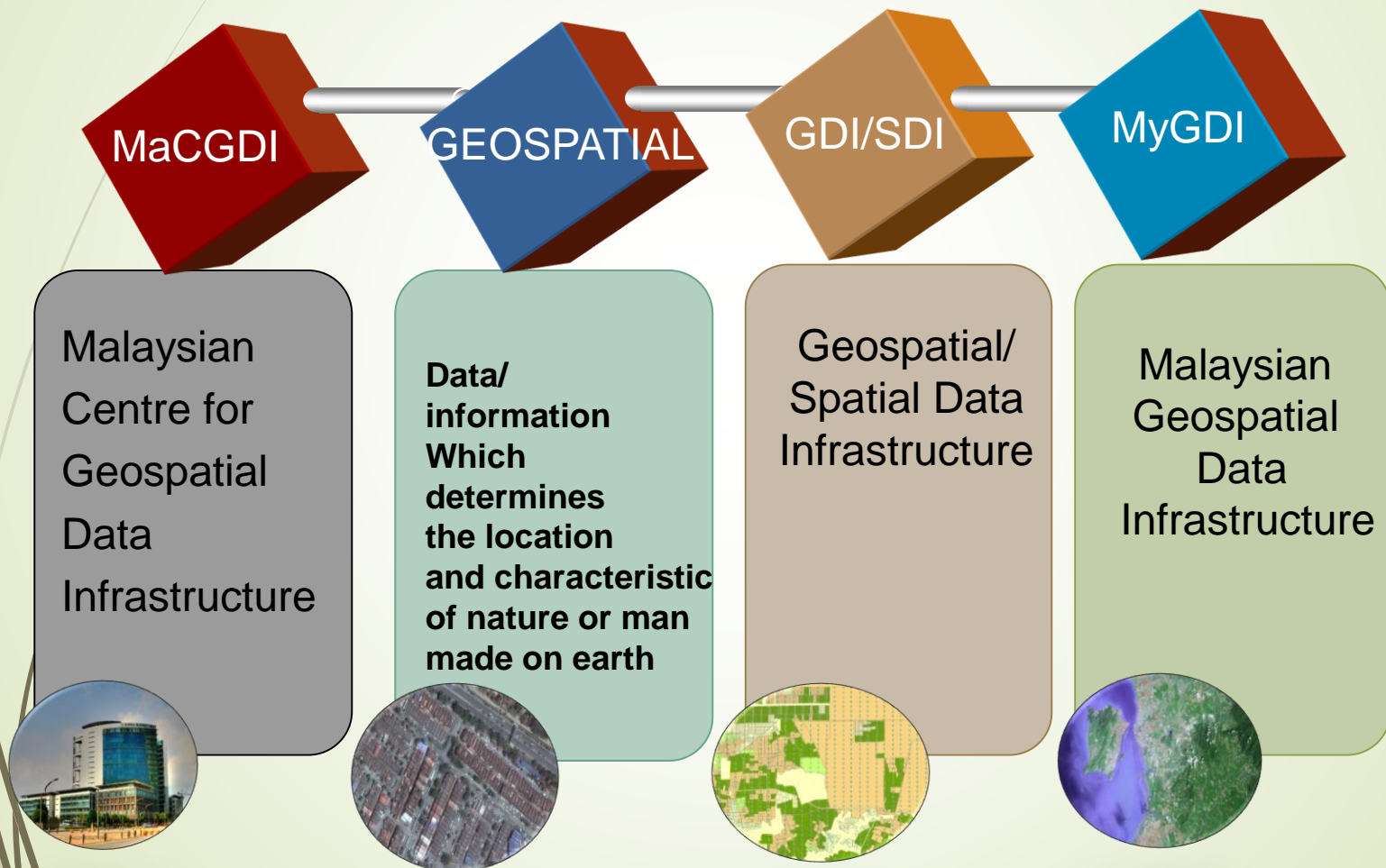
3

SUCCESS STORY of MyGDI

4

**Issues / Challenges and
The Way Forward**

INTRODUCTION To MaCGDI & MyGDI



MaCGDI's Role

An advisor to the government of Malaysia in the formulation and implementation of policies regarding geospatial data

To coordinate activities pertaining to the development of geospatial data and standard for geographic information/geomatics

To be a technical reference center for advisory and consulting services with regard to the development and application of geospatial data

To represent the public sector in international forum, conferences and meetings involving geospatial data

To develop and coordinate MyGDI Clearinghouse activities

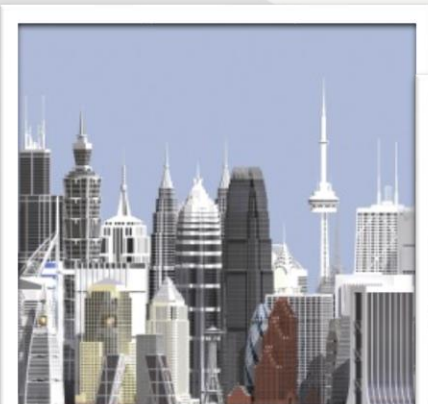
To plan and conduct human resource development program in GIS and the related fields

To organize various activities in promoting the use of MyGDI throughout the country

Research and Development (R&D)

Geospatial Information

Geospatial information answers the question, “where and what on earth is it”? It defines the locations of things that can be described in terms of space – schools, hotels, roads and highways, administrative boundaries and various areas



MyGDI Data Category

Quickbird, Worldview



LiDAR, UAV, Aerial Foto, IFSAR

Road, River, Utility, Mineral, District Boundary, Cadastral Lot, etc.

Soil, Mineral, Utility, etc.

Seabed Utility, Coral, Seabed mining, etc.

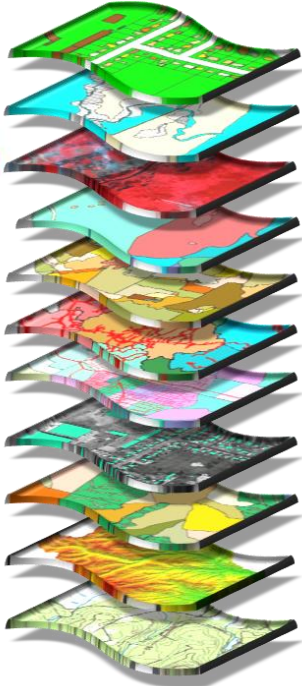
Spaceborne
>50,000ft

Airborne
20,000ft-50,000ft

Land
Surface

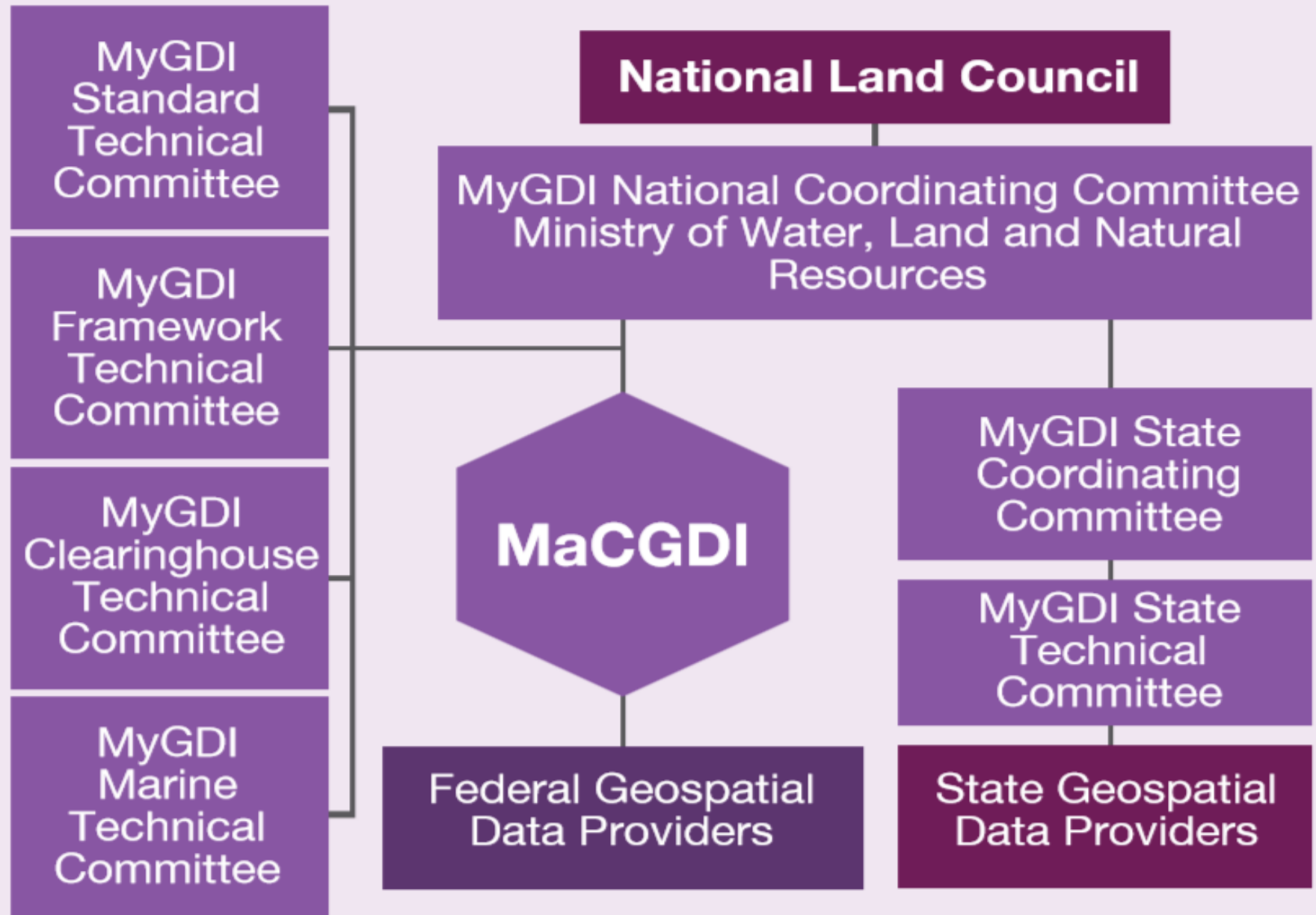
Underground

Maritime



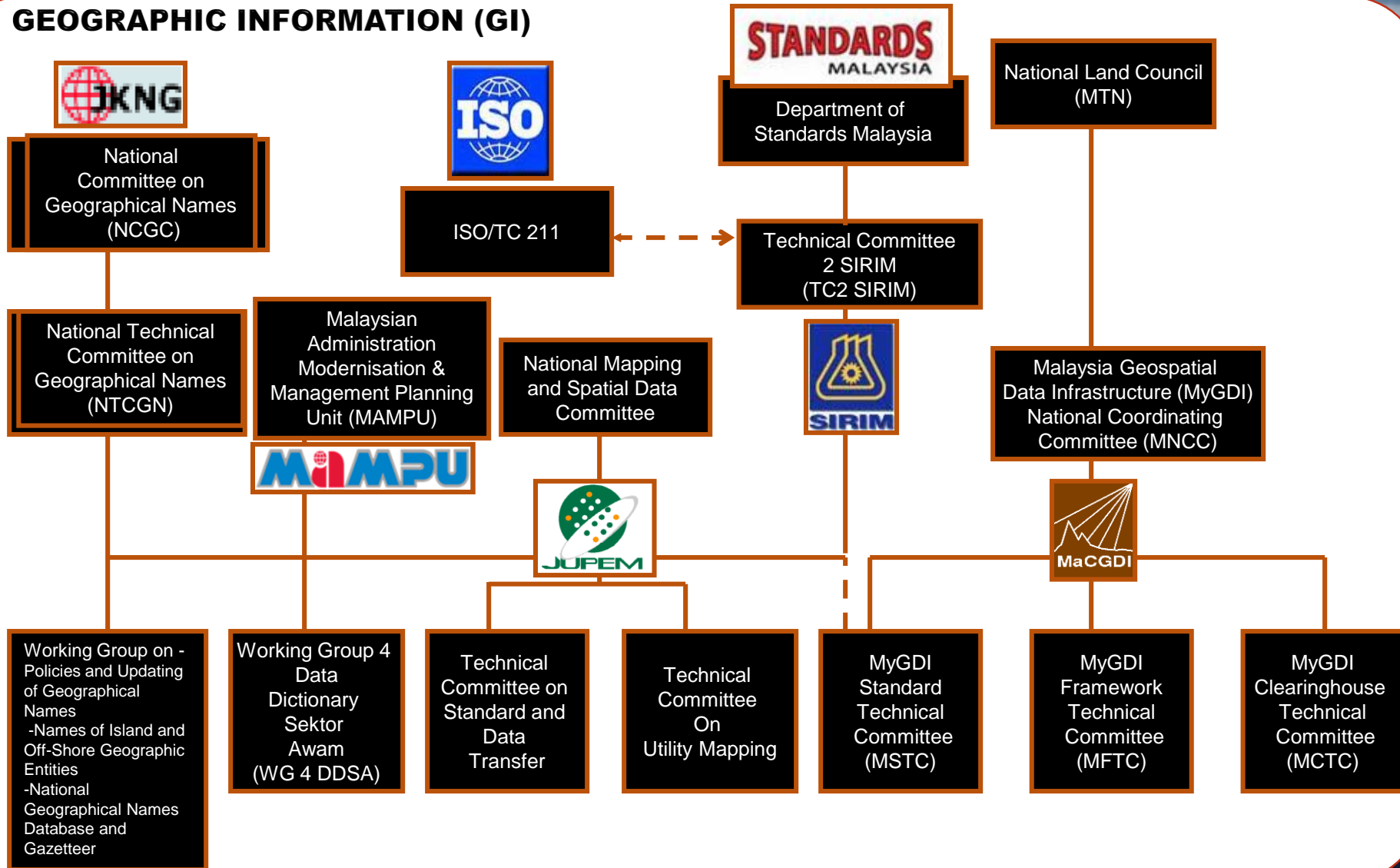
- Aeronautical
- Built Environment
- Demarcation
- Geology
- Hydrography
- Hypsography
- Soil
- Transportation
- Utility
- Vegetation
- Special Use
- General

MyGDI Governance



Organization and Committees

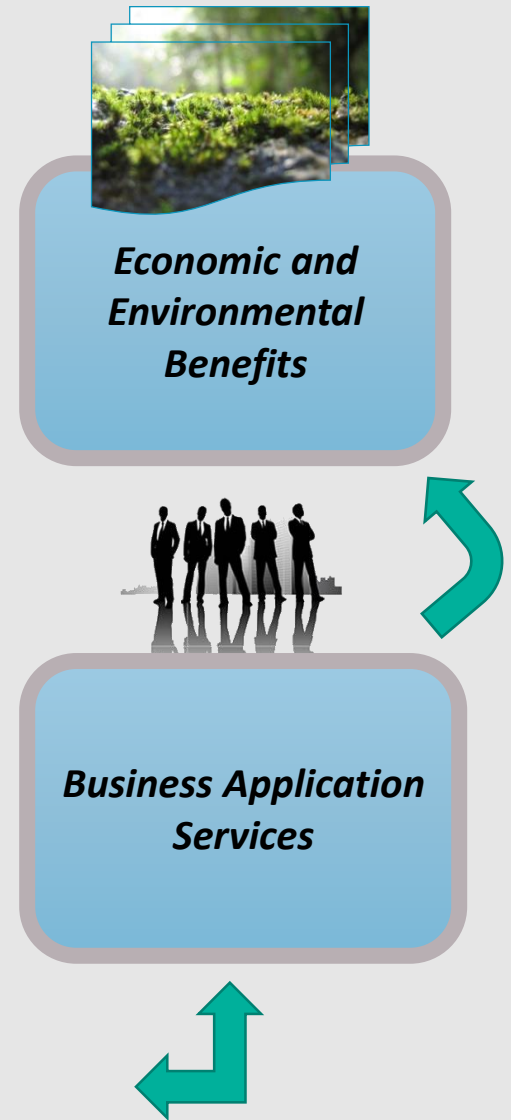
GEOGRAPHIC INFORMATION (GI)



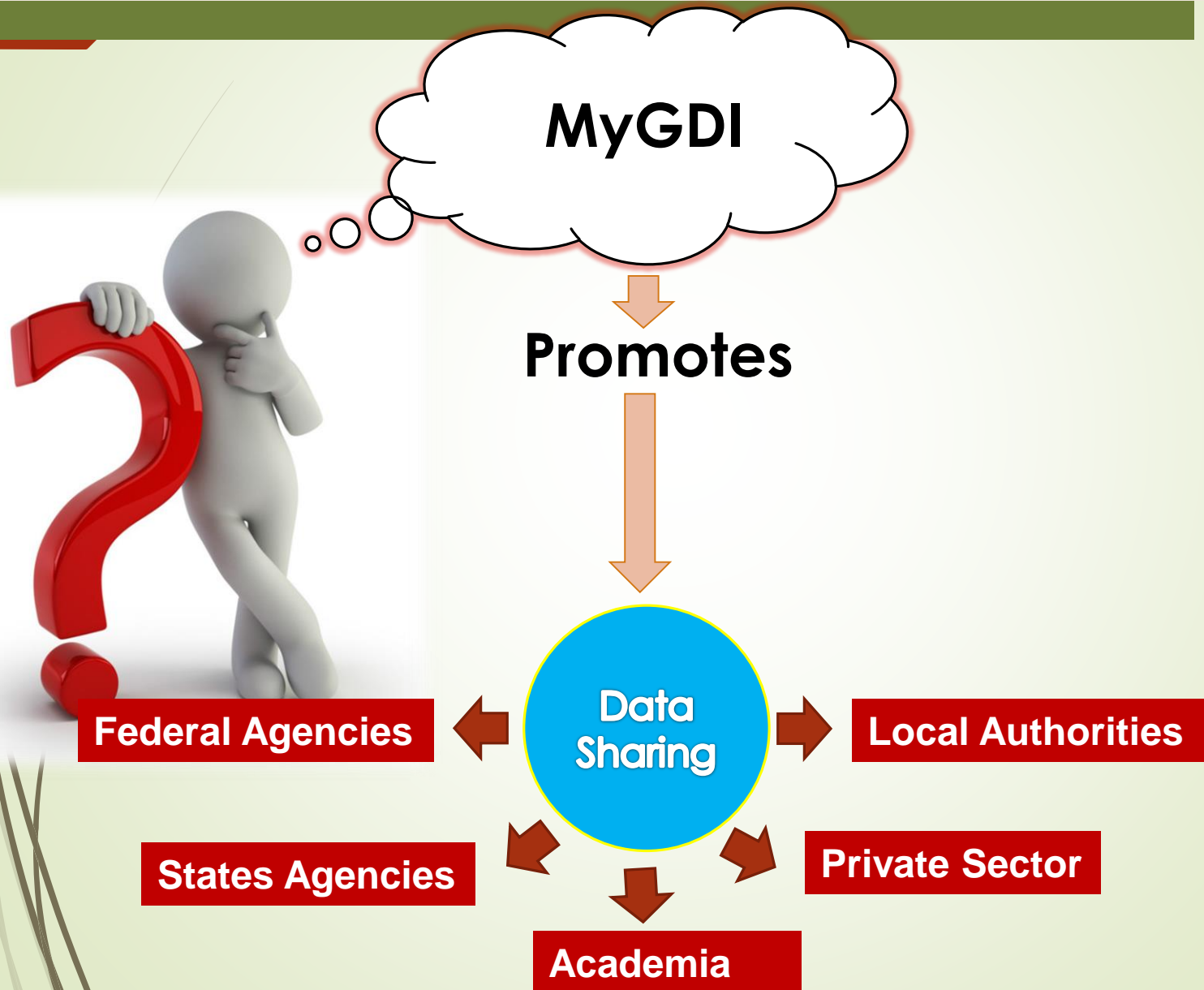
International GDI/SDI



MyGDI Components



Malaysia Geospatial Data Infrastructure (MyGDI)



MyGDI to Facilitate Spatial Enablement of Government and Society

A Geospatially Enabled Government is one that has ready access to the Geospatial, or geographic or location-based information and associated technologies it requires and is applying these productively to all areas of government endeavor. Geospatial enablement leads to:



**REDUCTION OF
ADMINISTRATIVE COSTS**

**ENHANCED RESEARCH AND
INDUSTRIES DEVELOPMENT
OPPORTUNITIES**

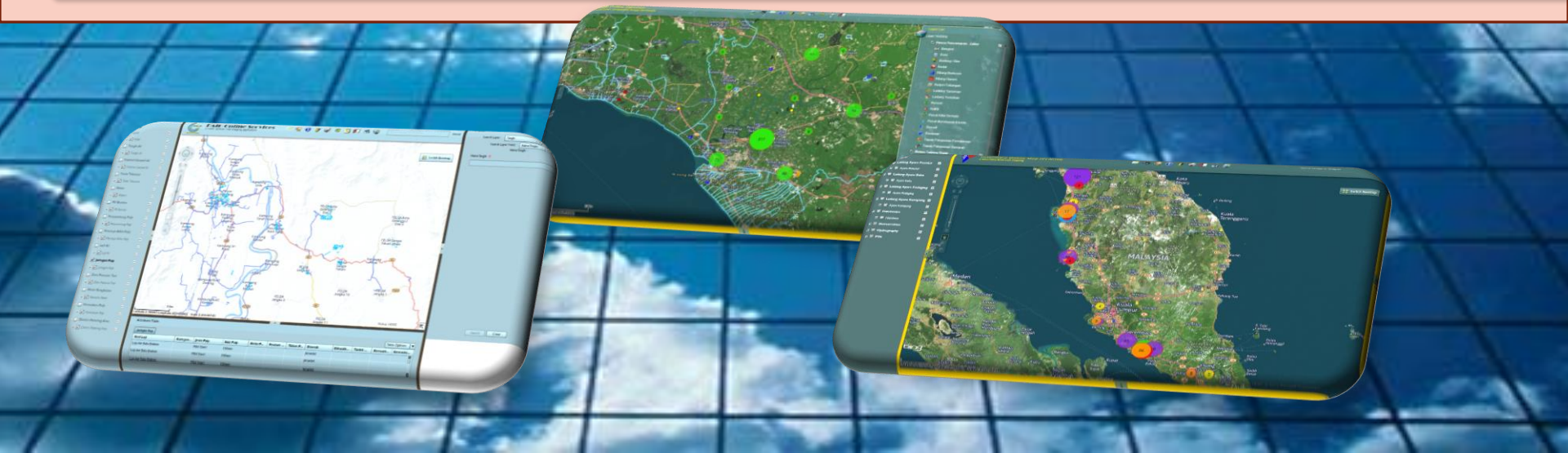


**IMPROVE DECISION
MAKING**

**IMPACT GOVERNMENT
OUTCOMES**



SUCCESS STORY of MyGDI



Application Development : For The Purpose of Data Sharing, Metadata, Viewing Data and Services



MyGDI Explorer

MyGDI Explorer is a geospatial metadata catalogue



MyGeoMap

MyGeoMap initially was developed to promote public awareness about geospatial information



MyGOS

Malaysia Geospatial Online Services (MyGOS) is an online Content Management platform

MyGDI Catalogue (MyGDI Explorer)

MyGDI Explorer

MyGDI Explorer

[Login](#) [Register](#) [Help](#) [About](#) [Feedback](#)

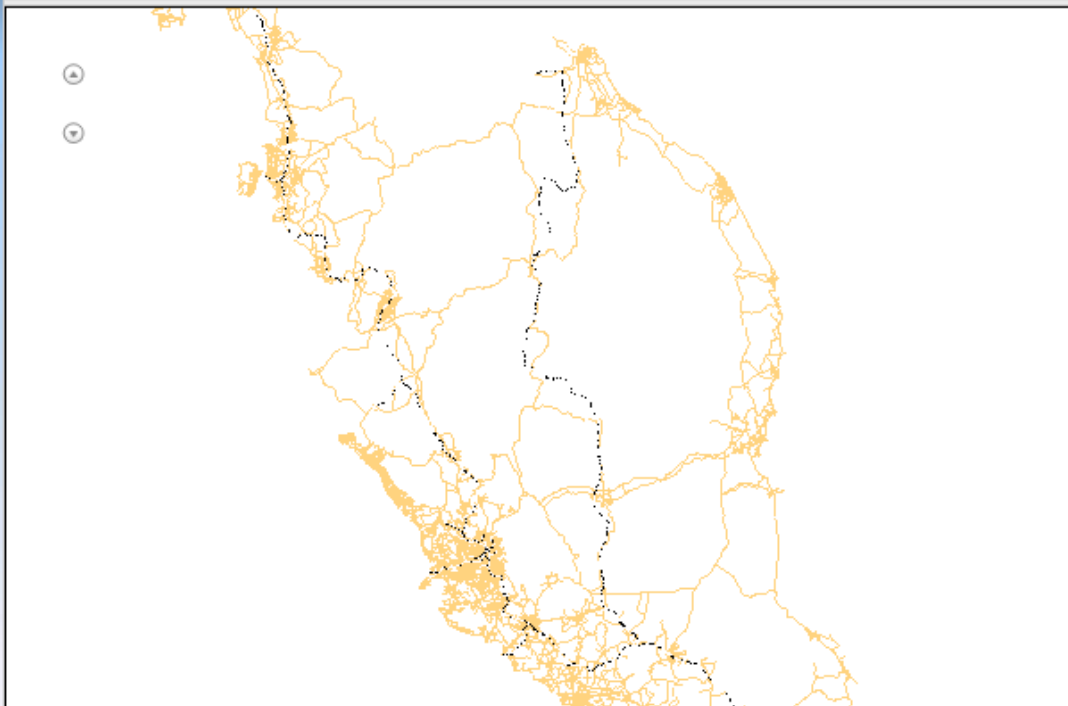


Serving Your Geospatial Information Needs

Preview

URL:

Embed:



NGDC - Road In Peninsular Malaysia

An established surface on the right of way in areas meant for exclusive use of vehicles. This data is part of National Geospatial Data Centre (NGDC) Framework Dataset project. This data was compiled from various sources which consist of federal and state...

[Open Preview Globe \(.kml\)](#) [Globe \(.nmf\)](#) [ArcMap Metadata Details](#) [Metadata \(XML\)](#)

MyGDI Explorer was built using the ArcGIS Server Geoportal Extension 9.3.1. Please read the [Disclaimer](#) and [Privacy](#) or [Contact Us](#).

NGDC Map Viewer

Search

hgdc

Search
Addition
Clear

WHERE

An

Bay of
ngal

Jakarta

Myang Padang

IEWER

MyGeoMap

The screenshot displays the MyGeoMap web application interface. At the top, a toolbar contains icons for map navigation and editing. A search bar on the right is labeled "Find address or place". The main map area shows a detailed view of Pahang, Malaysia, with numerous village names (e.g., Kg. Kor, Kg. Batu Baha, Kg. Kolam, Kg. Lada, Kg. Kelonding, Kg. Jambak, Kg. Kolam, Kg. Lada, Kg. Kelonding, Kg. Jambak, Kg. Kolam, Kg. Lada, Kg. Kelonding, Kg. Jambak) and various map markers. A scale bar at the bottom left indicates 4km, and the coordinates are shown as 102.219 3.977 Degrees. The word "PAHANG" is visible in the lower-left corner of the map area.



**MyCorridor
(MAMPU)**
Portal MyCorridor



**Department of
Veterinary
Services(MOA)**
Maklumat Geospasial
Penternak



**Pahang Water
Management
(PAIP)**
Pengurusan Air
Secara Online



**Railway Assets
Corporation
(MOT)**
Pengurusan Aset
Keretapi



**Department of
Wakaf, Zakat and
Hajj
(JAWHAR)**
Maklumat
Geospasial Tanah
Wakaf



**National
Hydrographic
Centre
(PHN)**
Katalog Carta
MAL- PHN

COLLABORATION WITH AGENCIES



**Public Works
Department
Malaysia (JKR)**
Pemantauan
Potholes Jalan
Persekutuan



**Unit GIS UPEN
Perlis**
Web GIS



**UPEN Pahang
UPEN Kedah
UPEN N.Sembilan**
Web GIS



**MKN, UPEN
Kelantan, PTJ Gua
Musang, PTJ
Kuala Krai**
Fasa Pemulihan
Banjir



**Halal Hub
Corporation**
Maklumat
Geospasial Halal



COLLABORATION WITHIN KATS & AGENCIES

Malaysia Geospatial Online Services (MyGOS)

- Publish and share authoritative basemaps
- Provide more geospatial contents and story maps
- Engaging non-GIS users in MyGDI

Mapping

Content Management

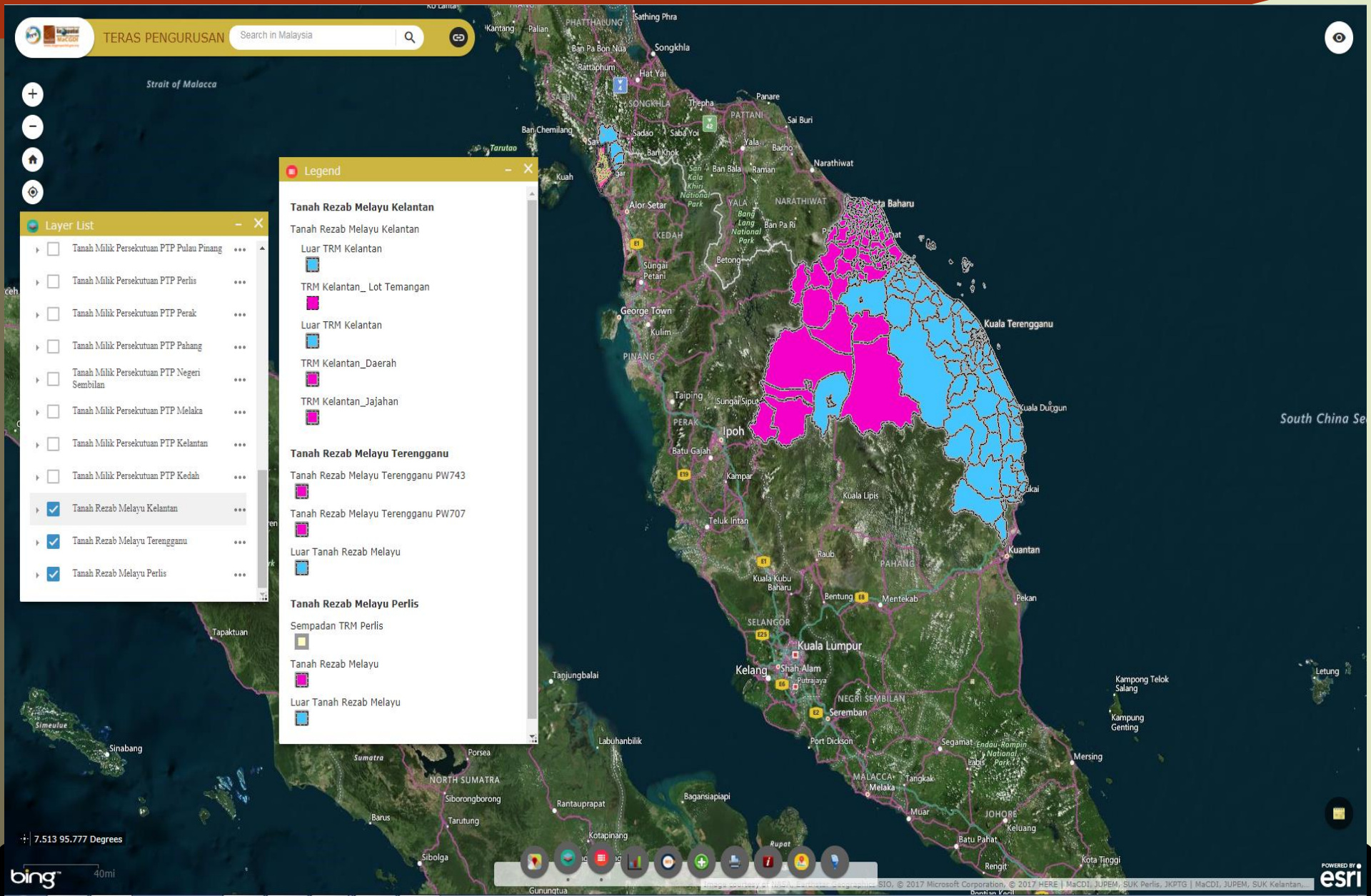
Collaborating and Sharing

The screenshot displays the MyGOS web application interface. The browser address bar shows the URL <https://mygos.mygeoportal...> and the page title is "ArcGIS Web Application". The application header includes the "TERAS PENGURUSAN" logo and a search bar with the text "Search in Malaysia". A "Layer List" panel is open on the left side, showing a list of "Operational Layers":

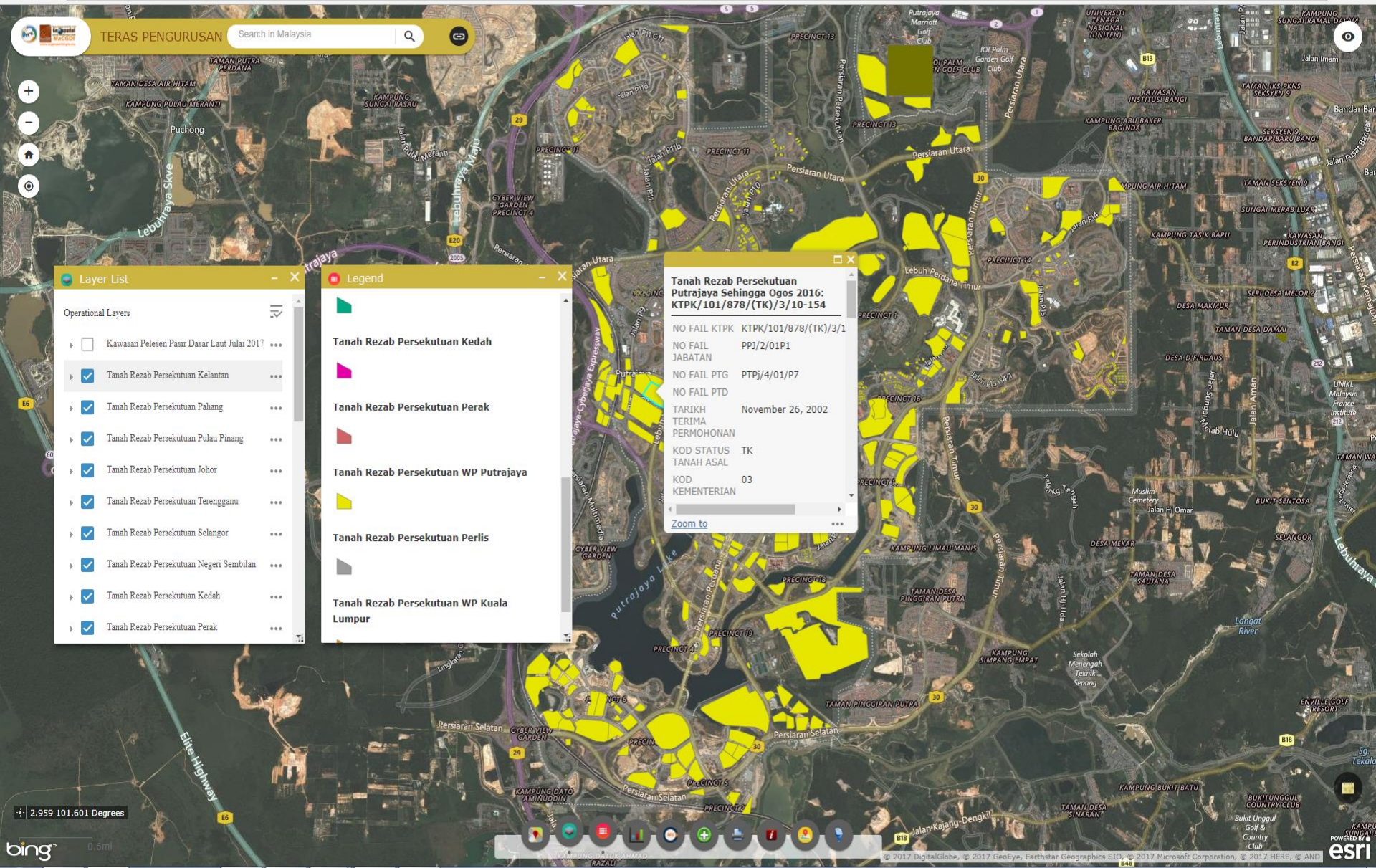
- Kawasan Pelesen Pasir Dasar Laut Mac 2017
- Tanah Rezab Persekutuan Kelantan
- Tanah Rezab Persekutuan Pahang
- Tanah Rezab Persekutuan Pulau Pinang
- Tanah Rezab Persekutuan Johor
- Tanah Rezab Persekutuan Terengganu
- Tanah Rezab Persekutuan Selangor
- Tanah Rezab Persekutuan Negeri Sembilan
- Tanah Rezab Persekutuan Kedah
- Tanah Rezab Persekutuan Perak

The main map area shows a geographical view of Malaysia with various cities and regions labeled, including Ipoh, Kuala Lumpur, and Kuala Terengganu. The map is overlaid with a grid and various navigation controls. The bottom right corner of the map area features the "POWERED BY esri" logo and a "Nokia" logo.

Malay Reserve Land



Federal Reserve Land



TERAS PENGURUSAN

Search in Malaysia

Layer List

Operational Layers

- Kawasan Pelesen Pasir Dasar Laut Julai 2017 ...
- Tanah Rezab Persekutuan Kelantan ...
- Tanah Rezab Persekutuan Pahang ...
- Tanah Rezab Persekutuan Pulau Pinang ...
- Tanah Rezab Persekutuan Johor ...
- Tanah Rezab Persekutuan Terengganu ...
- Tanah Rezab Persekutuan Selangor ...
- Tanah Rezab Persekutuan Negeri Sembilan ...
- Tanah Rezab Persekutuan Kedah ...
- Tanah Rezab Persekutuan Perak ...

Legend

- Tanah Rezab Persekutuan Kedah
- Tanah Rezab Persekutuan Perak
- Tanah Rezab Persekutuan WP Putrajaya
- Tanah Rezab Persekutuan Perlis
- Tanah Rezab Persekutuan WP Kuala Lumpur

Tanah Rezab Persekutuan Putrajaya Sehingga Ogos 2016: KTPK/101/878/(TK)/3/10-154

NO FAIL KTPK KTPK/101/878/(TK)/3/1
NO FAIL JABATAN PPJ/2/01P1
NO FAIL PTG PTPJ/4/01/P7
NO FAIL PTD
TARIKH TERIMA November 26, 2002
PERMOHONAN
KOD STATUS TK
TANAH ASAL
KOD KEMENTERIAN 03

Zoom to

Federal Owned Land

Ministry of Natural Resources and Environment [MY] | https://mygos.mygeoportal.gov.my/tpt/

TERAS PENGURUSAN Search in Malaysia

Layer List

- Tanah Rezab Persekutuan Perlis
- Tanah Rezab Persekutuan WP Kuala Lumpur
- Tanah Milik Persekutuan PTP Johor
- Tanah Milik Persekutuan PTP WP Kuala Lumpur
- Tanah Milik Persekutuan PTP WP Putrajaya
- Tanah Milik Persekutuan PTP WP Labuan
- Tanah Milik Persekutuan PTP Selangor
- Tanah Milik Persekutuan PTP Terengganu
- Tanah Milik Persekutuan PTP Pulau Pinang
- Tanah Milik Persekutuan PTP Perlis
- Tanah Milik Persekutuan PTP Perak

Legend

- Tanah Milik Persekutuan PTP WP Putrajaya**
 - Tanah Milik Persekutuan WP Putrajaya Sehingga Disember 2016
- Tanah Milik Persekutuan PTP WP Labuan**
 - Tanah Milik Persekutuan WP Labuan Sehingga Disember 2016
- Tanah Milik Persekutuan PTP Selangor**
 - Tanah Milik Persekutuan Selangor Sehingga Disember 2016
- Tanah Milik Persekutuan PTP Terengganu**
 - Tanah Milik Persekutuan Terengganu Sehingga Disember 2016

Tanah Milik Persekutuan WP Putrajaya Sehingga Disember 2016: DC0040

FCD	DC0040
FNM	Land Parcel or Lot
UPI	160140001000038
NAM	PUTRAJAYA
SUS	
JOIN_ID	160140P.U.(B)332
KOD_NEGERI	16
NAMA_NEGER	
KOD_DAERAH	01
NAMA_DAERA	PUTRAJAYA
KOD_MUKIM	40

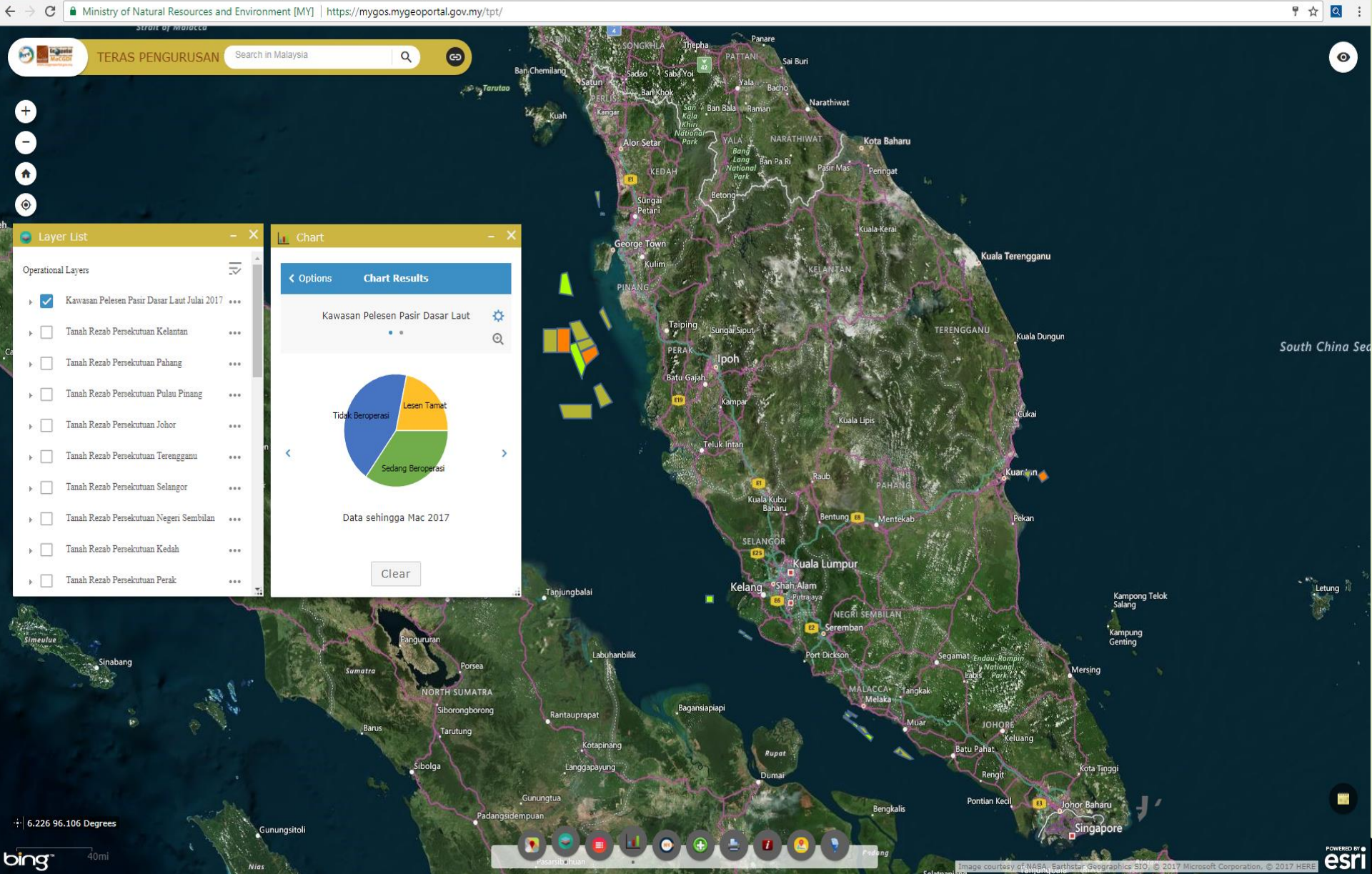
Zoom to

2.954 101.630 Degrees

bing

esri

Mining of Seabed Sand





Issues / Challenges and The Way Forward



OUR PRESENCE CHALLENGES

Legal Issues

There is no specific legislation relating to geospatial. Existing legislation at the federal, state, local authorities and statutory bodies are silos and confine to their respective sectors.

Expertise Development Issues

Lack of expertise in the geospatial field to meet the needs of government and industry

Geospatial Information Issues

Duplication of efforts in the collection, storage and dissemination of geospatial data that contribute to inefficiency of cost, time and human resources

1

3

5

2

4

6

Sharing Issues

Existence of various constraints that contribute to sharing of geospatial information required for planning, development, security and disaster management for the nation

ICT Infrastructure, Access and Security

Insufficient and inadequacy of ICT accessibility and security to geospatial information.

Governance Issues

The existence of various existing geospatial related committees which are not coordinated by any of the country's highest-level governance structure

PROBLEM STATEMENT



Irregularities of geospatial information management and activity across all sectors contributed to the loss of revenue and threaten the security and sovereignty of the nation.



KEMENTERIAN AIR, TANAH DAN SUMBER ASLI

Thank You

Should you have any queries or require any further information, please visit  www.mygeoportal.gov.my,

FB  www.facebook.com/mygeoportal or email  or.macgdi@1govuc.gov.my

Level 7 & 8, Wisma Sumber Asli,
No. 25, Persiaran Perdana, Precint 4,
Federal Government Administrative Centre,
62574, Putrajaya, Malaysia.
Tel.: +6 03-8886 1156 Fax: +6 03-8889 4851
www.mygeoportal.gov.my