

Putrajaya Development

By:

Putrajaya Holdings Sdn Bhd





About Putrajaya Holdings



Menara PjH

- Putrajaya Holdings Sdn Bhd (PjH) is the Master Developer of Putrajaya, Malaysia's Federal Administrative Capital
- PjH was incorporated in 1995 with the responsibility to undertake the comprehensive, highly strategic 20-year Putrajaya Masterplan development

Shareholders	Shareholding %
PETRONAS through KLCC(H) Sdn Bhd	64.41
Khazanah National Berhad (Govt's investment arm)	15.59
Kumpulan Wang Amanah Negara (The National Trust Fund)	20.00



Location of Putrajaya



- 25km from Kuala Lumpur, the capital city of Malaysia
- 25 km from Kuala Lumpur International Airport (KLIA)
- Situated in the southern part of Greater Klang Valley region, the fastest growing area of economic impetus in Malaysia
- Located within the Multimedia Super Corridor (MSC), a government initiated multimedia environment supported by high capacity fibre-optic backbone infrastructure



The tasks were;

to build a brand new city :



Palm Plantation



Rubber Estate



The Jatest view of Putrajaya



The latest view of Putrajaya



PUTRAJAYA HOLDINGS



THE MASTERPLAN



Facts on Putrajaya

	Planned	Current	Next Five Years
Area	4,930 hectares	4,930 hectares	4,930 hectares
Resident Population	350,000	82,000	100,000
Working Population	500,000	70,000	150,000
Government Office	3.8 million sqm.	2.9 million sqm	0.9 million sqm
Commercial	3.4 million sqm.	0.4 million sqm	1.0 million sqm
Residential Units	65,000	27,500	24,000

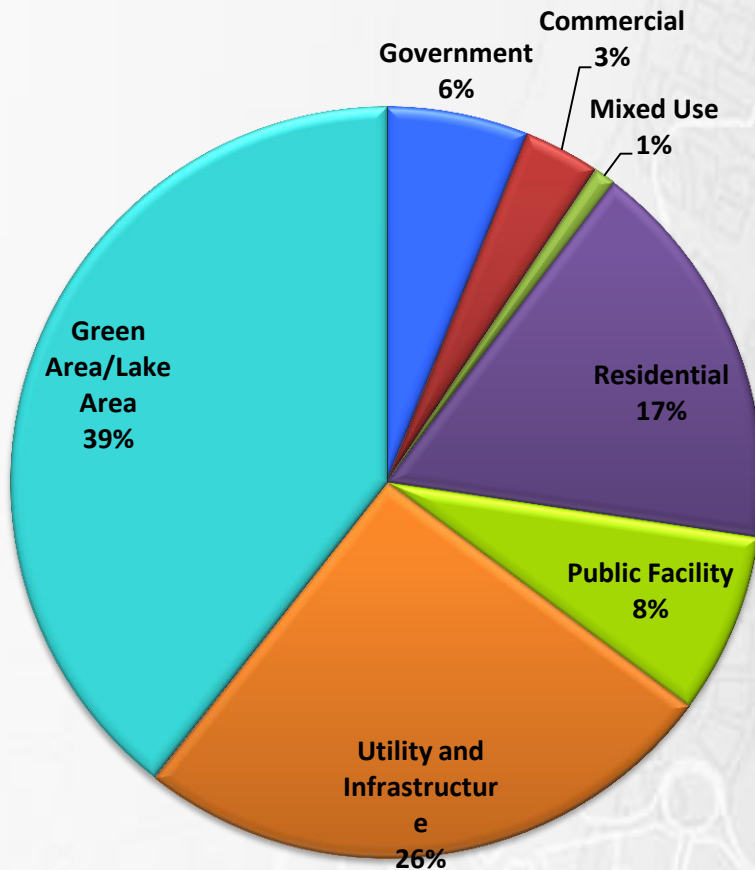
Master developer : Putrajaya Holdings Sdn Bhd
Local council : Putrajaya Corporation



Land Use	(%)	Hectare
Government	6.1	300.6
Commercial	3.2	160.8
Mixed Use	1.0	47.3
Residential	17.0	839.5
Public Facility	7.8	384.9
Utility and Infrastructure	25.5	1,255.7
Green Area/Lake Area	37.4	1,942.2
Total	100	4931.06



By Land Use

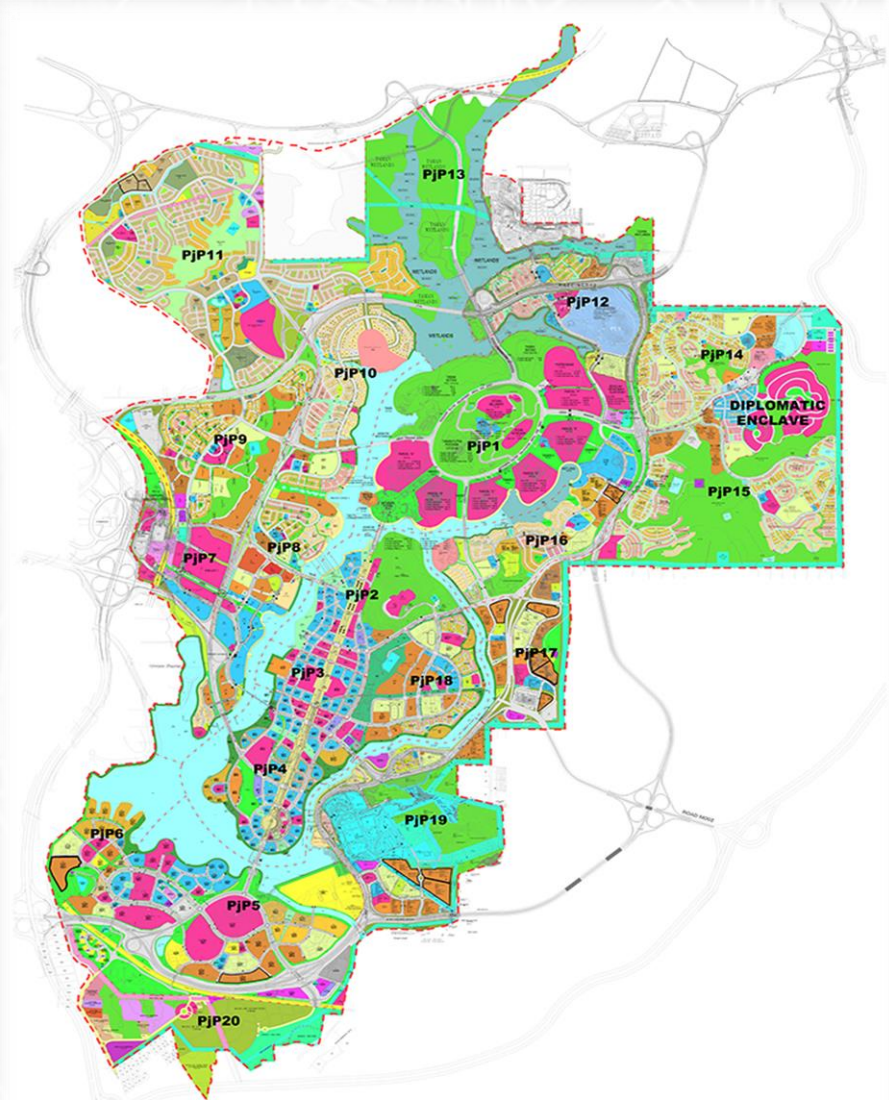


- Approximately 4 % (or 200 acres of land) was planned for commercial use (inclusive of mixed use).
- Commercial development includes office spaces, retail spaces, service apartments, shop lots, service industries, etc.

[Table]



- Consist of 20 precincts
- 37 % dedicated for green and parks
- The city revolves around the 400 hectares of man made lake
- Wetlands covers an area of 197 hectares
- Total waterfront length is approximately 38 km





Putrajaya MasterPlan

An integrated development combining Government, commercial and residential component

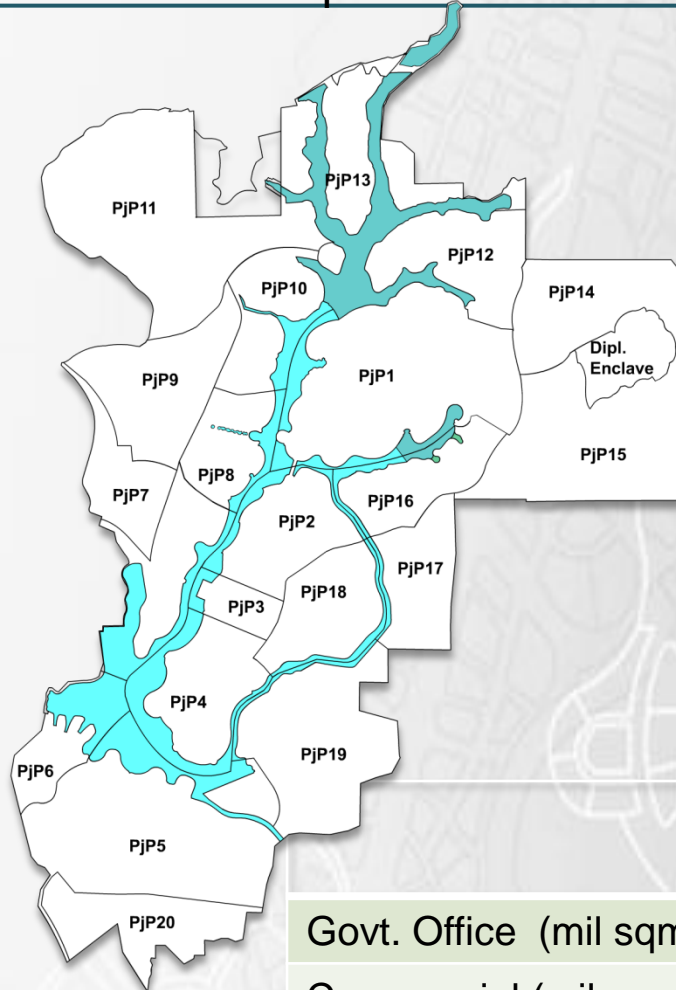
20 Precincts

37.4% lands dedicated for green & parks

400 hectares of man-made lake

197 hectares of wetland area

60km of waterfront frontage

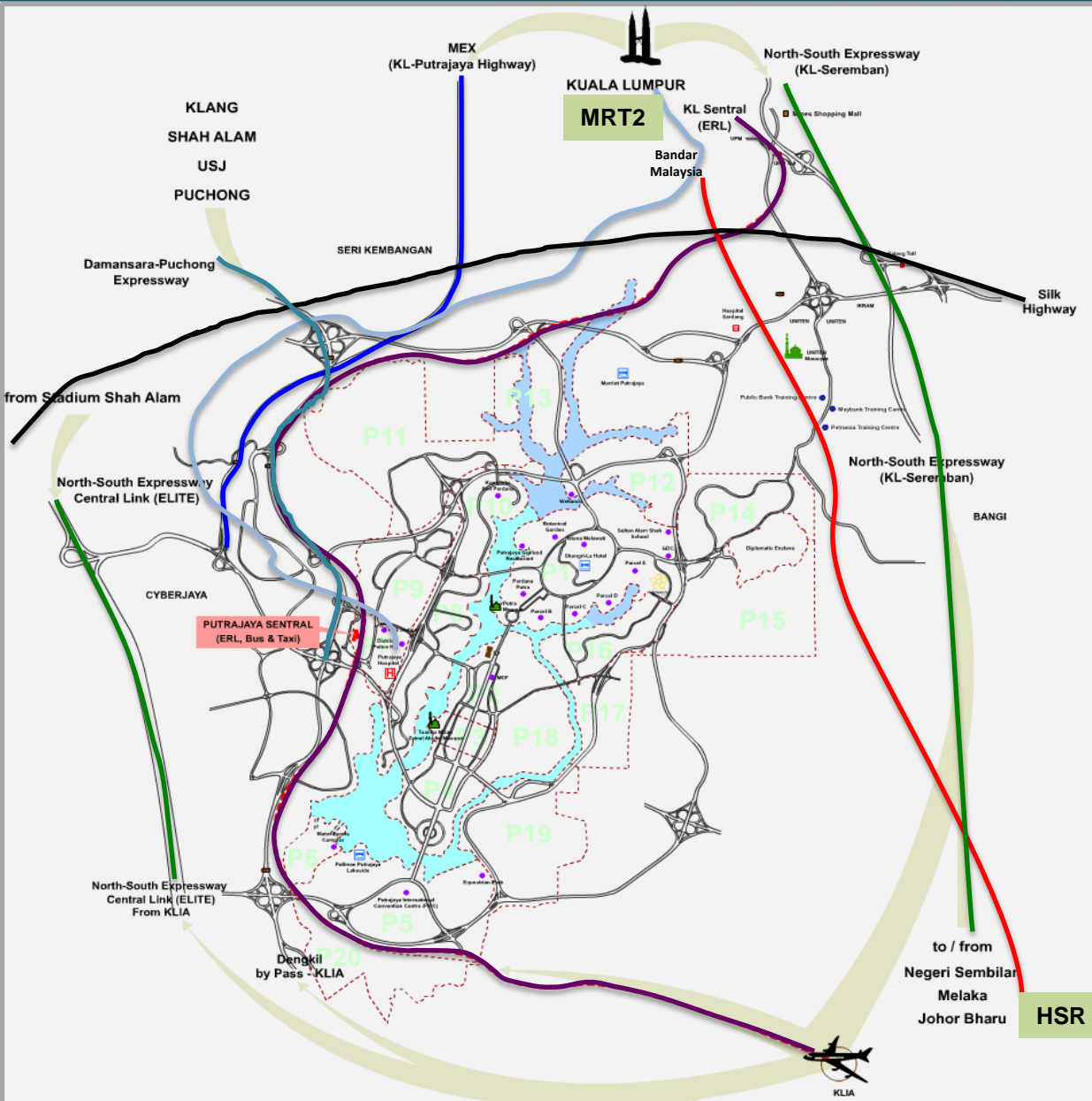


Land Usage	(%)	Hectare
Government	6.1	300.6
Commercial	3.2	160.8
Mixed Use	1.0	47.3
Residential	17.0	839.5
Public Facility	7.8	384.9
Utility & Infrastructure	25.5	1,255.7
Green Area/Lake Area	37.4	1,942.2
Total	100	4,931.0

	Key Target	Target in the next 5 years
Govt. Office (mil sqm)	3.9	3.9
Commercial (mil sqm)	4.4	1.3
Residential Units	75,707	38,763
Resident Population	350,000	193,815
Working Population	500,000	200,000



Infrastructure: Getting Into Putrajaya



By ROAD

6 Major Highways

- North South Expressway (KL-Seremban)
- North South Expressway (ELITE)
- Damansara Puchong Expressway
- BESRAYA Expressway
- South Klang Valley Expressway
- Maju Expressway (MEX)

By RAIL

Existing

- KLIA ERL Transit

Upcoming

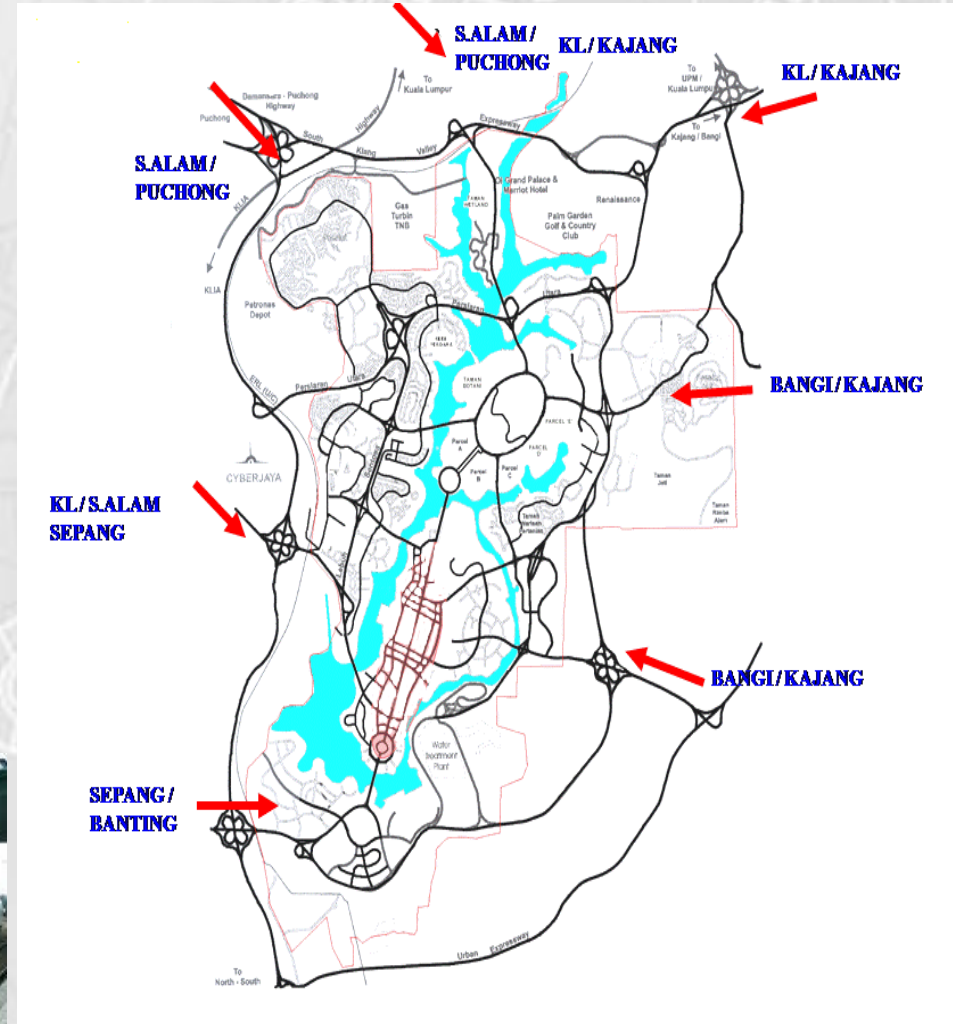
- MRT2 (SSP) – 2022
- HSR - 2025

to / from
Negeri Sembilan
Melaka
Johor Bharu
HSR



Infrastructure: Public Transportation

- **Integrated public transportation**
 - Nadi Putra Bus Services
 - Park & Ride facility
- **Excellent internal road system**
 - 7 main ingress/egress to Putrajaya
- **Future Monorail system**
 - Ready infrastructure for underground monorail system to facilitate travel on the Core Island
 - Proposed stations at every 400 metre
 - Connectivity to Putrajaya Sentral



Park & Ride



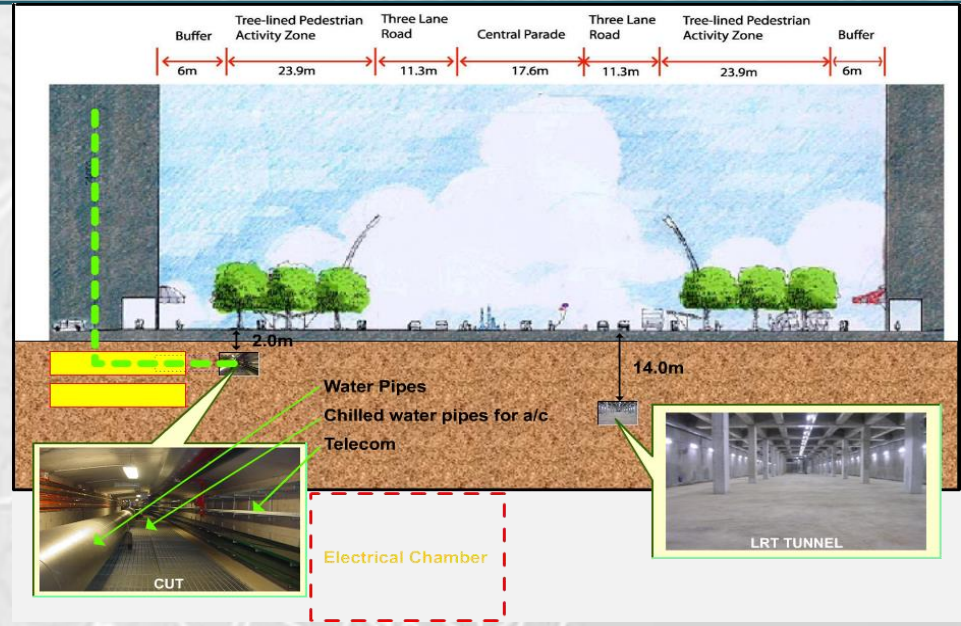
ERL Transit



Infrastructure

PUTRAJAYA HOLDINGS

- Putrajaya is supported by high bandwidth fibre-optic backbone infrastructure
- Common Utility Tunnel (CUT) to house all utilities namely electricity, telecommunications, water, gas and chilled water
- This shall minimise :
 - Disruptions of utility services
 - Unsightly repair works that may also cause traffic congestion





Green City Initiatives

37% (1942ha) of land dedicated to Green and Lake Area

Putrajaya's Green initiatives to-date :

Energy

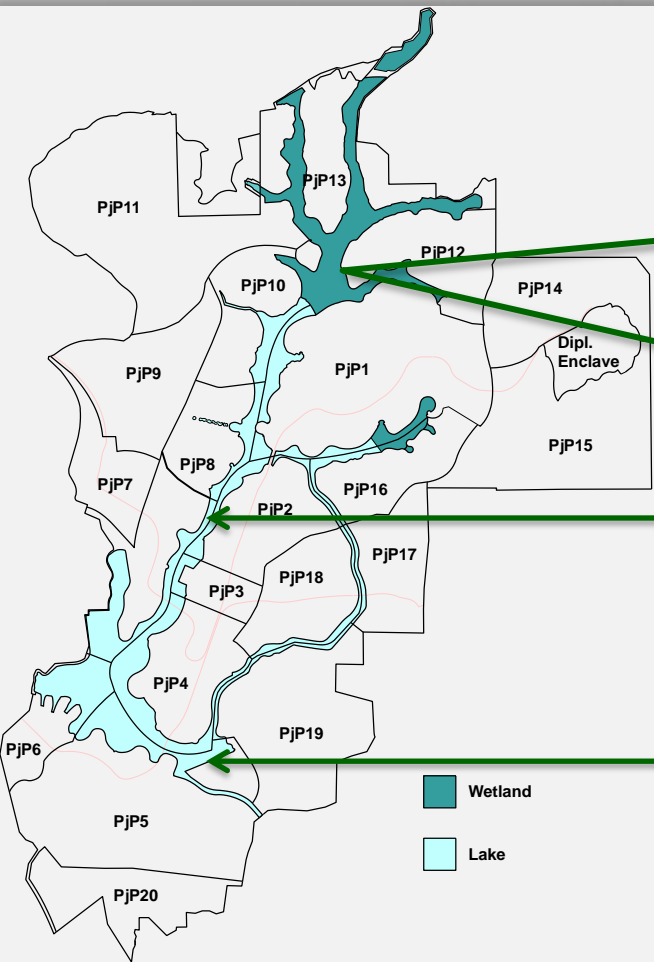
Waste Reduction

Urban Design & Urban Natural

Transportation

Environmental Health

Water





Amenities & Facilities:

Healthcare Services

- Putrajaya offers a high standard of health care services. Hospital Putrajaya is currently being supported by 4 outpatients clinics
- National Cancer Institute commenced operation in 2013





Amenities & Facilities:

Safety & Security

The residents of Putrajaya can rest assured of their safety and security as the Police, Marine Police and Fire Department adopt state of the art monitoring and surveillance systems.





PUTRAJAYA HOLDINGS

Amenities & Facilities

Everly Hotel and Pullman Putrajaya are owned by PjH

The Everly Putrajaya



Pullman Putrajaya





Amenities & Facilities:

Education facilities owned by PjH



International school established in 2008 at Precinct 15 to cater for expatriates and local students



- Heriot Watt University Malaysia commenced operations in a lake-side campus at Precinct 5 in September 2014
- 220,000 sq ft Gross Floor Area catering to 3000 students (at peak)



PUTRAJAYA HOLDINGS

Amenities & Facilities:

Sports & Recreations



Neighborhood Centre (PjP16)



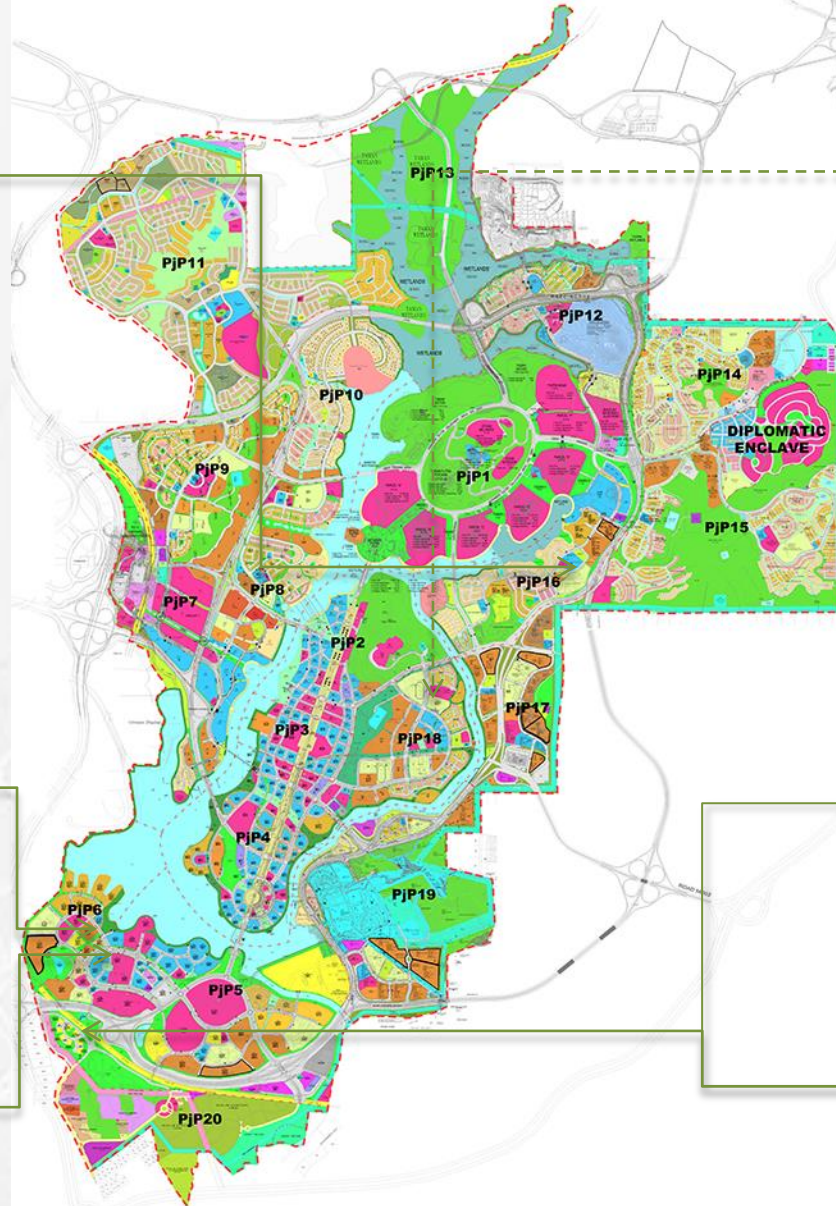
Dragon-boat activity at Lake



Water Sports Centre (P6)



Marina Putrajaya (PjP5)



Taman Pancarona (PjP18)



Taman Equestrian (PjP6)



Challenge Park-Climbing Gym



Challenge Park – Skate Park



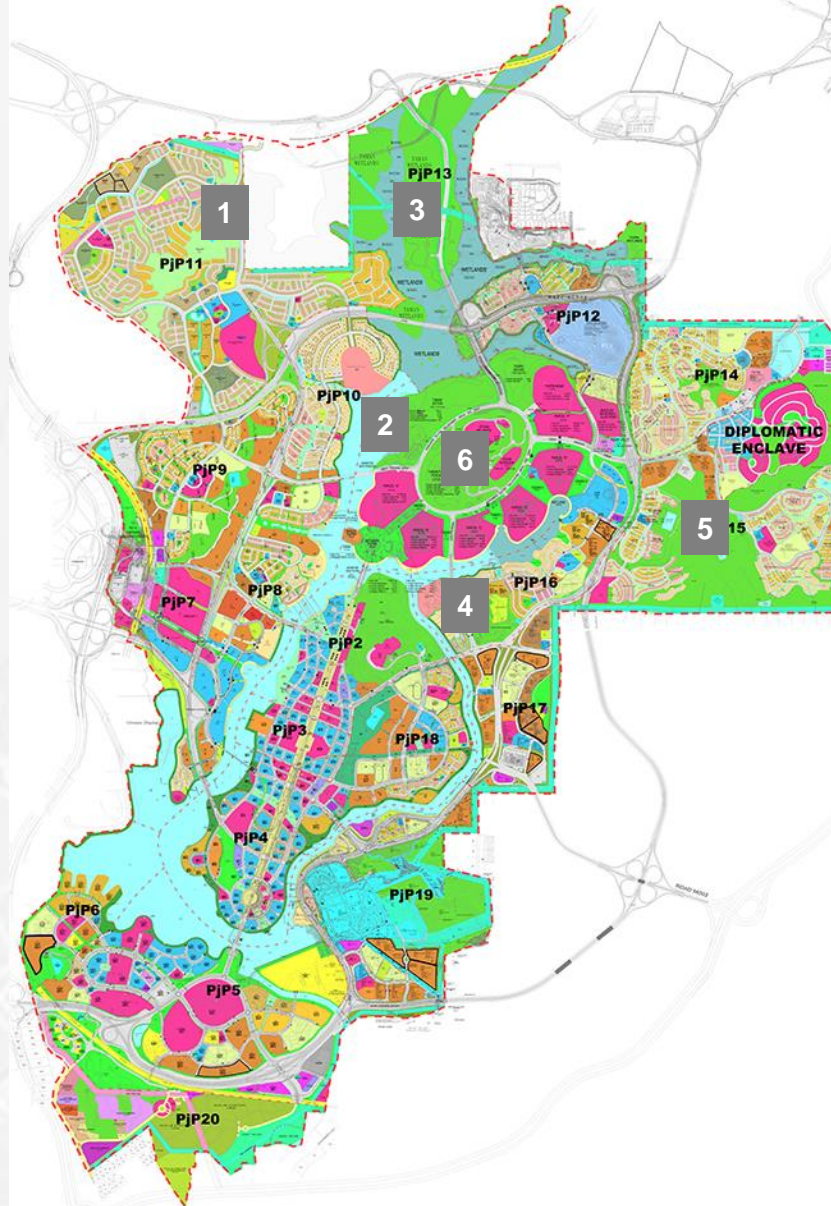
PUTRAJAYA HOLDINGS

Amenities & Facilities:

Putrajaya has in total 13 parks with different theme and attractions



1 Taman Saujana Hijau (PjP11)



4 Taman Warisan Pertanian (PjP16)



2 Taman Botani (PjP1)



5 Taman Rimba Alam (PjP15)



Astaka Morocco (PjP1)



6 Taman Putra Perdana (PjP1)



3 Taman Wetland (PjP13)



Lakeside Walkway (PjP1)



Putrajaya Events & Festivals



Floats – Putrajaya Floria Fest



Formula 1 Power Boat Race

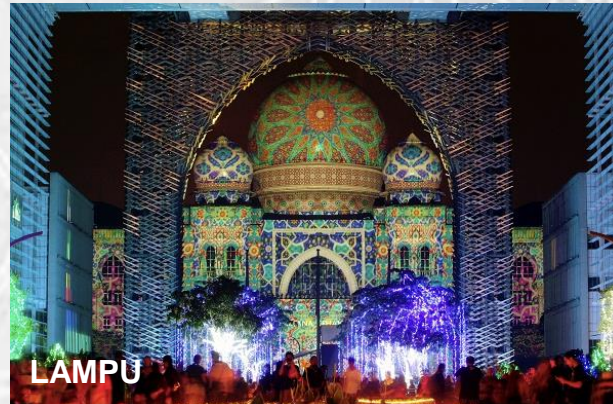


View from PICC

Fireworks Competition



Putrajaya Hot Air Balloon Festival



LAMPU



Red Bull Air Race



Formula E



Putrajaya

Health & fitness events



WORLD SERIES 2017
POWERMAN
 MALAYSIA
 ASIA CHAMPIONSHIPS
 PUTRAJAYA

4-5 March 2017
 PUTRAJAYA, MALAYSIA

Powerman Asia Duathlon Championships – Malaysia www.powermanmalaysia.com

Chapter 3:
 Farther . Further

PUTRAJAYA DEUTER
TRAIL RUN 2015

Putrajaya Challenge Park May 2015

MensHealth WomensHealth
NIGHT RUN
 PENANG | PUTRAJAYA | JOHOR

REGISTER NOW!
 BY **AIA Vitality**

IRONMAN
70.3 PUTRAJAYA
 MALAYSIA

4:50:44

BSN PUTRAJAYA MARATHON

NIGHT RUNNER
NULLI SECUNDUS

24 OCTOBER 2015
 6.00PM ONWARDS
 DATARAN PUTRAJAYA, PRESENT 3
www.bsngym.com

ULTRA
 AQUATHLON
 2016

VENUE
 PUTRAJAYA, MALAYSIA

DATE
 24TH JANUARY 2016

TIME
 7.30 AM

WWW.EVENTUREGLOBAL.COM

Eventure Global PUTRAJAYA

ELECTRIC RUN
 RECHARGED

15 APRIL
 ANJUNG FLORIDA PRECINCT 4
PUTRAJAYA

FLAG OFF TIME: 8PM

EARLY BIRD TICKETS: RM 78 | WWW.ELECTRICRUN.MY

PUTRAJAYA
 NIGHT MARATHON
 2016

PRESINT 3, PUTRAJAYA | 12.11.2016

DEFINE YOUR
 INNER STRENGTH



Government Buildings

PjH has completed 86% of the planned government buildings of 3.9 mil sqm



1 Prime Minister's Office



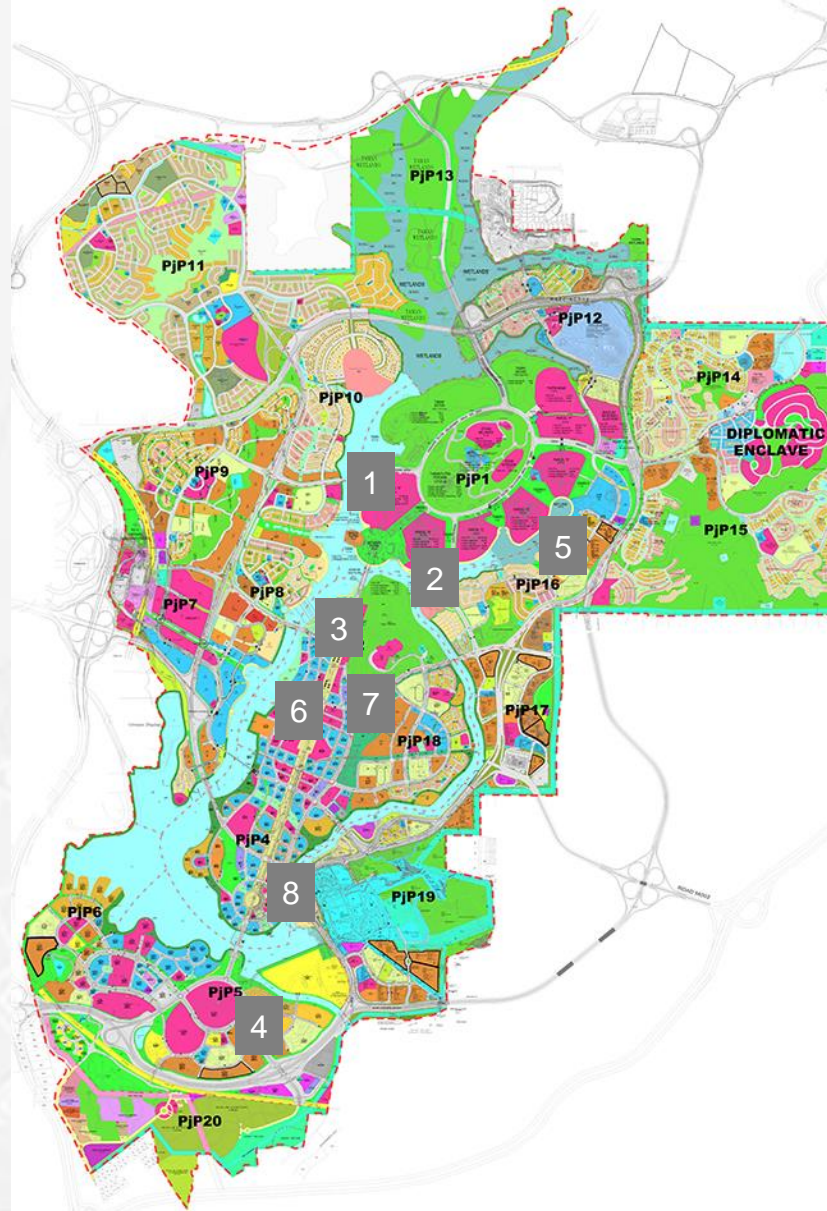
2 Parcel B



3 Ministry of Finance



4 Putrajaya Convention Centre



5 Parcel D



6 Govt. Buildings at Precinct 2



7 Lot 2C10 - Election Commission

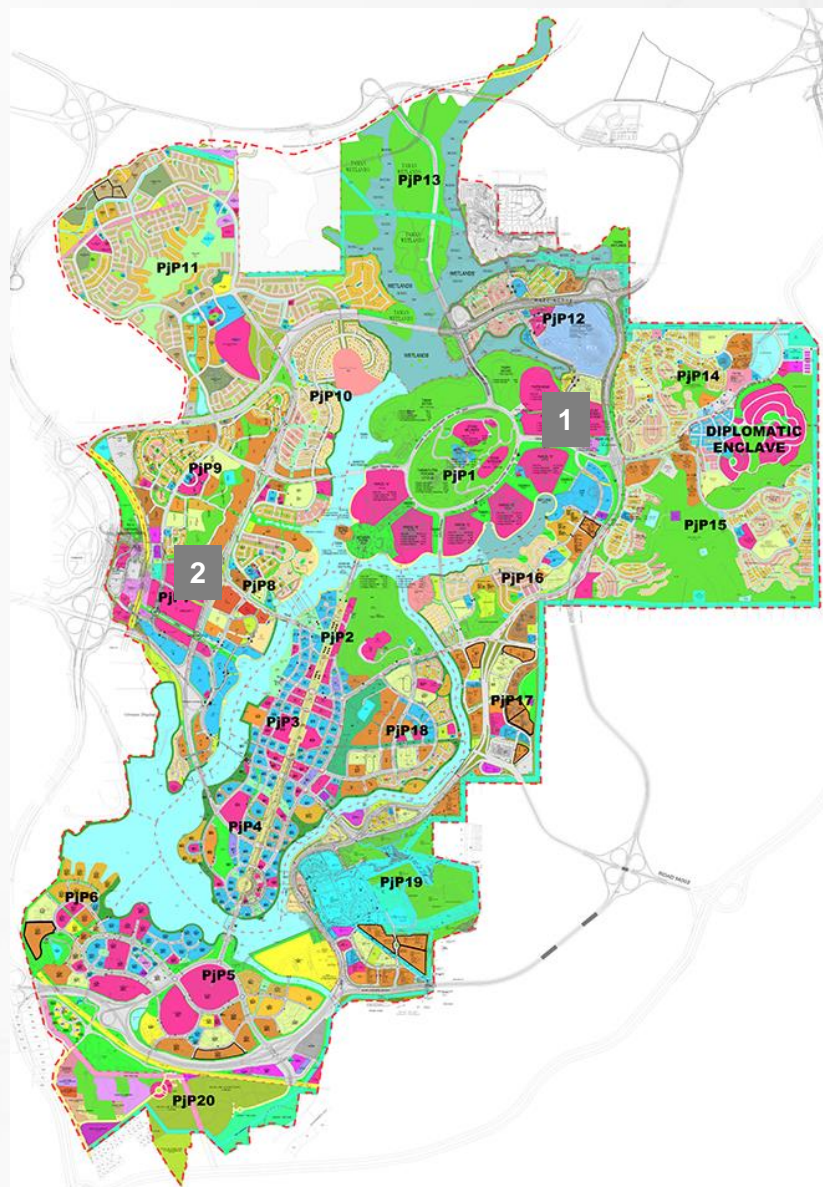


8 Govt. Buildings at Precinct 4



Government Buildings

Under-construction



1

Parcel F (PjP1)



2

Lot 7G1 – Malaysia Anti Corruption Commission (PjP7)



Residential Development

PUTRAJAYA HOLDINGS

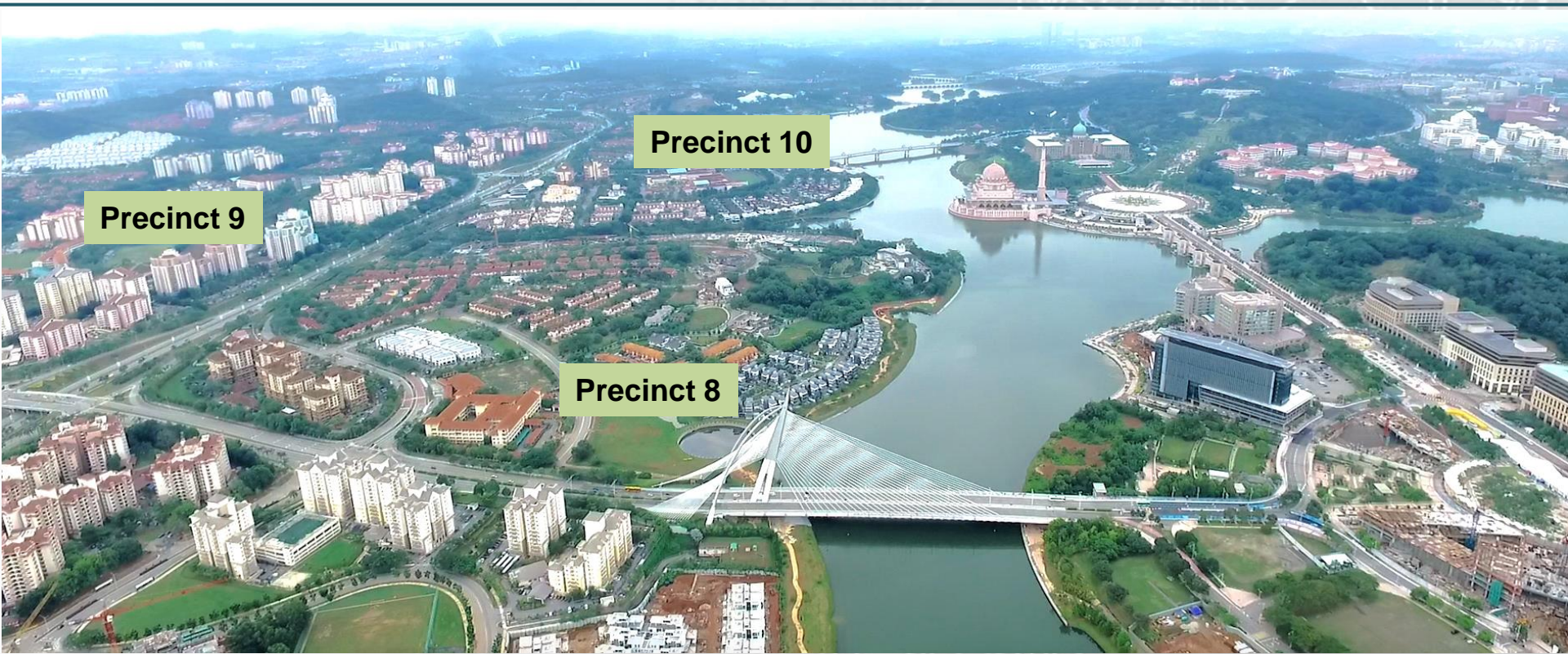
Completed/Handed Over Housing by Type

PRECINCT	TYPE	COMPLETED/HANDED OVER			
		GOVT QTRS	PUBLIC	PPA1M	TOTAL
OVERALL GOVT QTRS	GOVT Bungalow	181			181
	GOVT Semi-D	1,405			1,405
	GOVT Terrace	3,486			3,486
	GOVT Apartment	17,380			17,380
OVERALL PUBLIC	PUBLIC Bungalow		79		79
	PUBLIC Semi-D		665		665
	PUBLIC Terrace		1,760		1,760
	PUBLIC Town House		96		96
	PUBLIC Condo/Apartment		1,225		1,225
	PUBLIC Mixed Dev.		-		-
	Affordable Homes		2538		2,538
	PR1MA		560		560
	PPA1M			1,943	1,943
TOTAL		22,452	6,923	1,943	31,318



Government Quarters

Panorama view of Government Quarters



Precinct 10



Bungalow



Semi D



Government Quarters

PUTRAJAYA HOLDINGS

Precinct 8



Terrace

Precinct 9



Terrace



Apartment



Semi D



Apartment



Affordable Home



Public Residential

Exclusive Lake-side Residence at Precinct 8



Fera – aerial view



**Fera
Type D**



**Fera
Type D**



Yara



Tamara



Sera



Public Residential

Under-construction and in the pipe-line



Flora Rosa (PjP11)



Muirfield (PjP12)



Astana (PjP8)



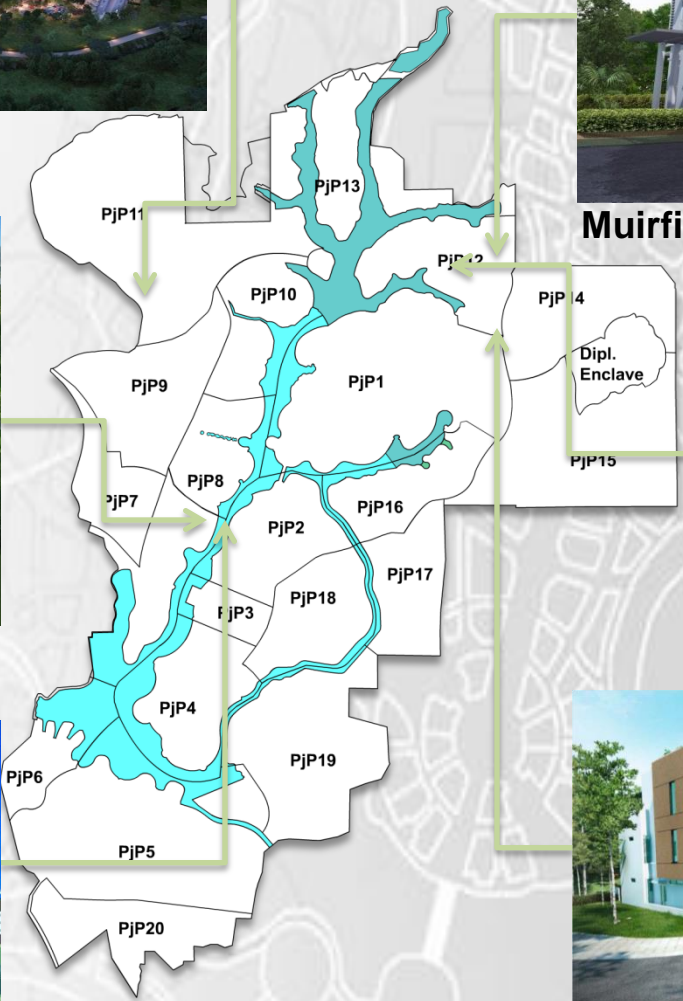
Augusta (PjP12)



Aura (PjP8)



Duta Villa (PjP14)





Retail & Commercial

Owned by PjH



Z10 (PjP1)
NFA : 133,764 sqft

Occupancy:
23%

Alamanda (PjP1)
NFA : 725,376 sqft

Occupancy
88%



Menara PjH (PjP2)
NFA : 390,974 sqft
Occupancy : 51%



Galeria PjH (PjP3)
NFA : 442,478 sqft
Occupancy
92%



Anjung (PjP1)
NFA : 27,279 sqft
Occupancy :
32%



Suasana PjH (PjP2) - Completing 3Q17
NFA : 601,444 sqft



Retail & Commercial

Under-construction - Parcel Z (Plot Z1 – Z4) – Precinct 1





Retail & Commercial

Under-construction - Parcel Z Plot Z5 Precinct 1, Shaftsbury Avenue @Putrajaya

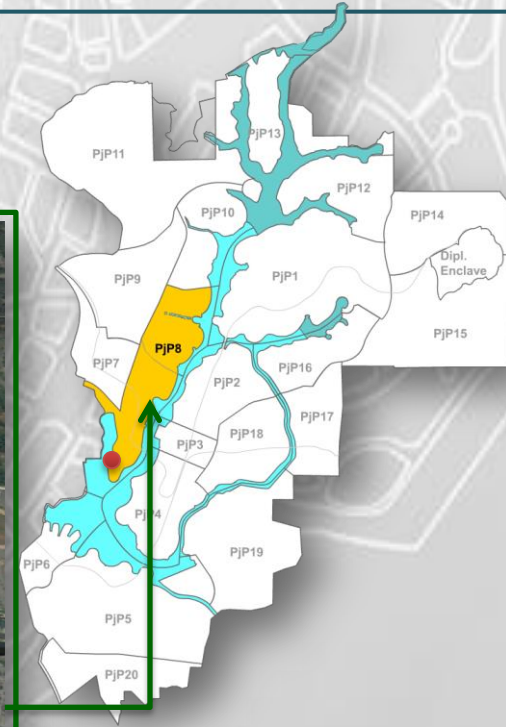
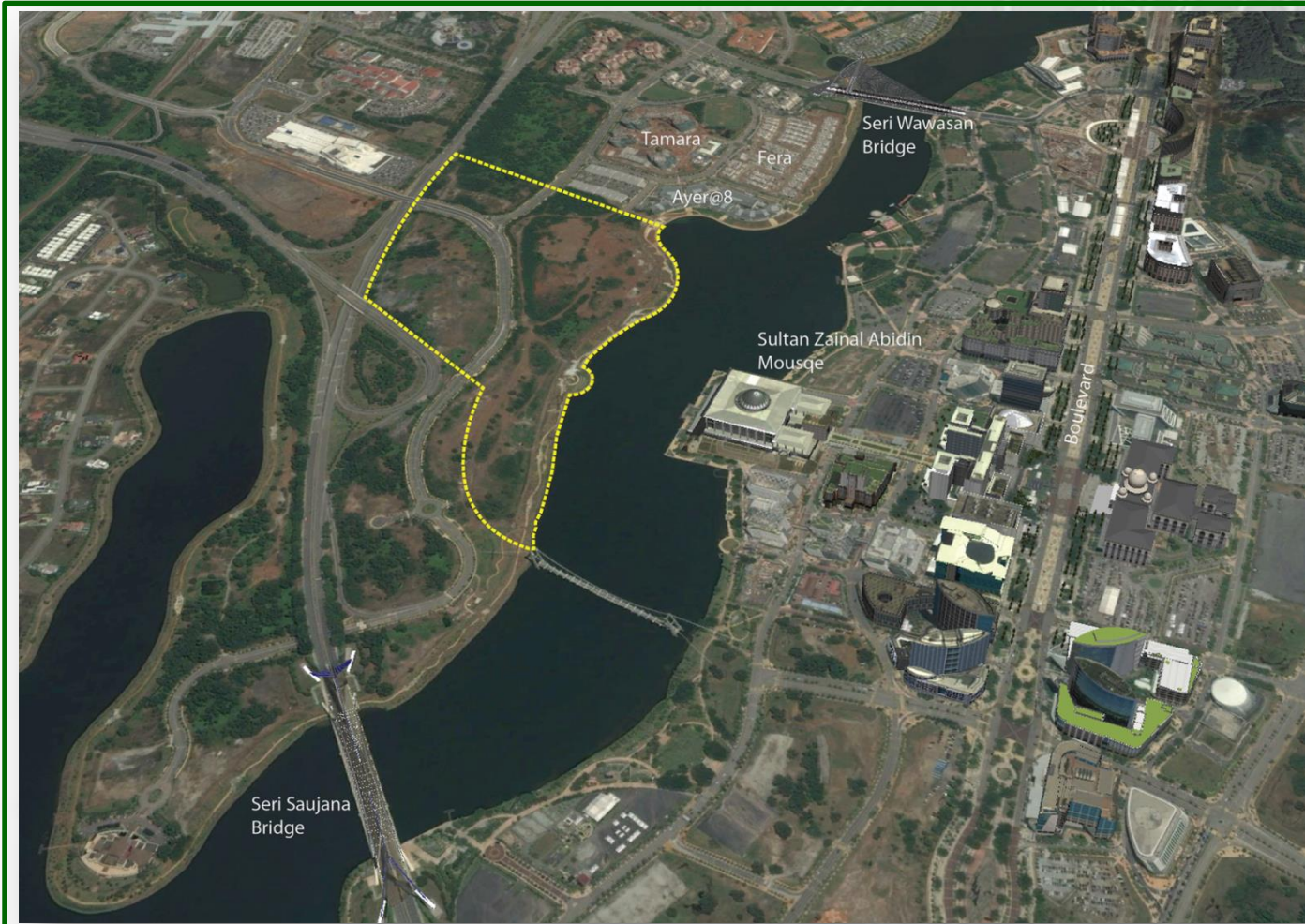


JV Project with IkHasas



PUTRAJAYA HOLDINGS

Mixed Development, Precinct 8



Location Site



PUTRAJAYA HOLDINGS

Thank You